

Basicline 433

Electric height-adjustable washbasin module with mirror and lighting

- Width 62 cm
- Integrated safety switch
- Mirror and lighting move in tandem with basin
- Free space below the unit for plumbing connections
- Easy-to-use hand controller





433-11-05

Page 20



- Overall depth 60.0 cm
- Compact washbasin for children or confined spaces

433-01-05

Page 21



- Overall depth 64.6 cm
- Wheelchair accessible washbasin with shallow bowl and concave front edge

433-03-05

Page 22



- Overall depth 70.6 cm
- Wheelchair accessible washbasin with shallow bowl, concave front edge and easy-to-grip sides

433-10-05

Page 23



- Overall depth 70.6 cm
- Wheelchair accessible washbasin with shallow bowl, generous flat surfaces and easy-to-grip sides

433-15-05

Page 24



- Overall depth 70.6 cm
- Wheelchair accessible washbasin with shallow bowl and integrated gripping slots



Functions and advantages

- Legroom under the washbasin, 600 mm
- Distance to mixer lever, 225 mm
- Compact washbasin for children or confined spaces

Standard equipment

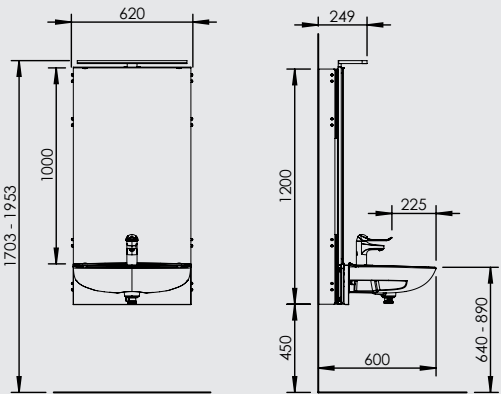
- Washbasin (425-011)
- Mixer (425-105)
- Mirror and lighting
- Flexible drain hose with drainage trap
- Flexible water hoses
- Hand controller with coiled cable
- Safety breaker

Specifications

Lift model	Electric steplessly height-adjustable washbasin module with mirror and lighting
Legroom	600 mm
Mixer	150 mm lever. Distance to mixer lever, 225 mm
Overall depth from wall	600 mm
Washbasin	Porcelain washbasin 600x445 mm, incl. overflow and bottom drain with plug
Max load, washbasin	50 kg
Operation	Cable controller with hook, IP65
Width	620 mm
Installation	Wall mounted
Height adjustment	250 mm
Speed	18 mm/sec.
Lifting force	100 kg
Electrical connection	Plug for 230 V, max 1.5A
Lighting	Aluminium/plastic, colour: chrome LED lighting, 7W, 4000 k (connects to external power) Transformer: 230 V
Enclosure class	IPX4
Safety	The safety switch will stop the basin from lowering if it comes into contact with the user's legs.
Material-specification	Back panel: White melamine covered chipboard W899 with 2 mm ABS strip all round Mounting plate, washbasin: Powder coated aluzinc-coated sheet steel, white RAL 9010 Mirror: 1000/600/4 mm in silver-backed float glass with ground edges incl. mirror clips Safety switch and other sheet metal parts: Powder-coated sheet steel
Plumbing connections	Flexible water hoses and drain hose with water trap
	CE

Art. no.	Designation
433-11-05	BASICLINE 433-11-05 - incl. single lever mixer with 150 mm lever

(mm)





Art. no.	Designation
433-01-05	BASICLINE 433-01-05 - incl. single lever mixer with 150 mm lever

Functions and advantages

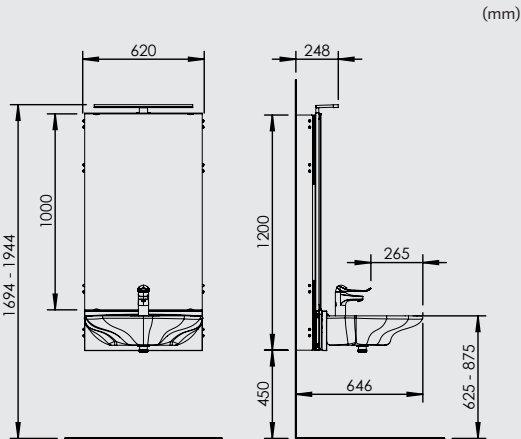
- Legroom under the washbasin, 646 mm
- Distance to mixer lever, 265 mm
- Wheelchair accessible washbasin with shallow bowl and concave front edge

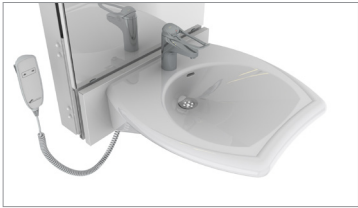
Standard equipment

- Washbasin (425-001)
- Mixer (425-105)
- Mirror and lighting
- Flexible drain hose with drainage trap
- Flexible water hoses
- Hand controller with coiled cable
- Safety breaker

Specifications

Lift model	Electric steplessly height-adjustable washbasin module with mirror and lighting
Legroom	646 mm
Mixer	150 mm lever. Distance to mixer lever, 265 mm
Overall depth from wall	646 mm
Washbasin	Porcelain washbasin 600x490 mm, incl. overflow and bottom drain with plug
Max load, washbasin	50 kg
Operation	Cable controller with hook, IP65
Width	620 mm
Installation	Wall mounted
Height adjustment	250 mm
Speed	18 mm/sec.
Lifting force	100 kg
Electrical connection	Plug for 230 V, max 1.5A
Lighting	Aluminium/plastic, colour: chrome LED lighting, 7W, 4000 k (connects to external power) Transformer: 230 V
Enclosure class	IPX4
Safety	The safety switch will stop the basin from lowering if it comes into contact with the user's legs.
Material-specification	Back panel: White melamine covered chipboard W899 with 2 mm ABS strip all round Mounting plate, washbasin: Powder coated aluzinc-coated sheet steel, white RAL 9010 Mirror: 1000/600/4 mm in silver-backed float glass with ground edges incl. mirror clips Safety switch and other sheet metal parts: Powder-coated sheet steel
Plumbing connections	Flexible water hoses and drain hose with water trap
CE	





Art. no.	Designation
433-03-05	BASICLINE 433-03-05 - incl. single lever mixer with 150 mm lever

Functions and advantages

- Legroom under the washbasin, 706 mm
- Distance to mixer lever, 324 mm
- Wheelchair accessible washbasin with shallow bowl, concave front edge and easy-to-grip sides

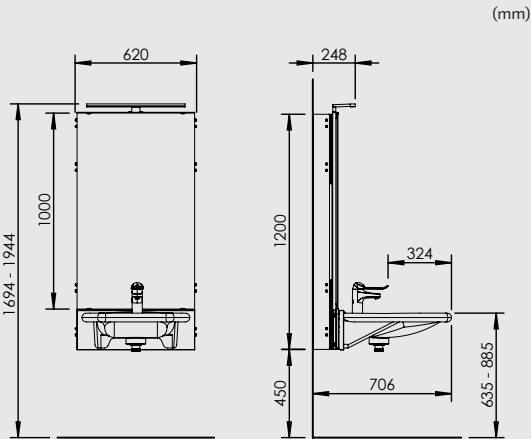
Standard equipment

- Washbasin (425-003)
- Mixer (425-105)
- Mirror and lighting
- Flexible drain hose with drainage trap
- Flexible water hoses
- Hand controller with coiled cable
- Safety breaker

Specifications

Lift model	Electric steplessly height-adjustable washbasin module with mirror and lighting
Legroom	706 mm
Mixer	150 mm lever. Distance to mixer lever, 324 mm
Overall depth from wall	706 mm
Washbasin	Porcelain washbasin 550x550 mm, incl. overflow and bottom drain with plug
Max load, washbasin	50 kg
Operation	Cable controller with hook, IP65
Width	620 mm
Installation	Wall mounted
Height adjustment	250 mm
Speed	18 mm/sec.
Lifting force	100 kg
Electrical connection	Plug for 230 V, max 1.5A
Lighting	Aluminium/plastic, colour: chrome LED lighting, 7W, 4000 k (connects to external power) Transformer: 230 V
Enclosure class	IPX4
Safety	The safety switch will stop the basin from lowering if it comes into contact with the user's legs.
Material-specification	Back panel: White melamine covered chipboard W899 with 2 mm ABS strip all round Mounting plate, washbasin: Powder coated aluzinc-coated sheet steel, white RAL 9010 Mirror: 1000x600x4 mm in silver-backed float glass with ground edges incl. mirror clips Safety switch and other sheet metal parts: Powder-coated sheet steel
Plumbing connections	Flexible water hoses and drain hose with water trap

CE





Art. no.	Designation
433-10-05	BASICLINE 433-10-05 - incl. single lever mixer with 150 mm lever

Functions and advantages

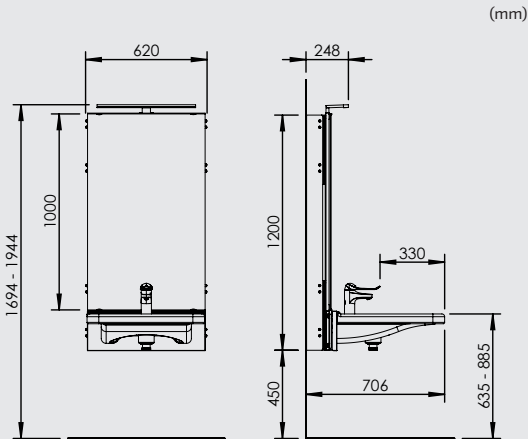
- Legroom under the washbasin, 706 mm
- Distance to mixer lever, 330 mm
- Wheelchair accessible washbasin with shallow bowl, generous flat surfaces and easy-to-grip sides

Standard equipment

- Washbasin (425-010)
- Mixer (425-105)
- Mirror and lighting
- Flexible drain hose with drainage trap
- Flexible water hoses
- Hand controller with coiled cable
- Safety breaker

Specifications

Lift model	Electric steplessly height-adjustable washbasin module with mirror and lighting
Legroom	706 mm
Mixer	150 mm lever. Distance to mixer lever, 330 mm
Overall depth from wall	706 mm
Washbasin	Porcelain washbasin 600x550 mm, incl. overflow and bottom drain with plug
Max load, washbasin	50 kg
Operation	Cable controller with hook, IP65
Width	620 mm
Installation	Wall mounted
Height adjustment	250 mm
Speed	18 mm/sec.
Lifting force	100 kg
Electrical connection	Plug for 230 V, max 1.5A
Lighting	Aluminium/plastic, colour: chrome LED lighting, 7W, 4000 k (connects to external power) Transformer: 230 V
Enclosure class	IPX4
Safety	The safety switch will stop the basin from lowering if it comes into contact with the user's legs.
Material-specification	Back panel: White melamine covered chipboard W899 with 2 mm ABS strip all round Mounting plate, washbasin: Powder coated aluzinc-coated sheet steel, white RAL 9010 Mirror: 1000/600/4 mm in silver-backed float glass with ground edges incl. mirror clips Safety switch and other sheet metal parts: Powder-coated sheet steel
Plumbing connections	Flexible water hoses and drain hose with water trap
	CE





Art. no.	Designation
433-15-05	BASICLINE 433-15-05 - incl. single lever mixer with 150 mm lever

Functions and advantages

- Legroom under the washbasin, 706 mm
- Distance to mixer lever, 315 mm
- Wheelchair accessible washbasin with shallow bowl and integrated gripping slots

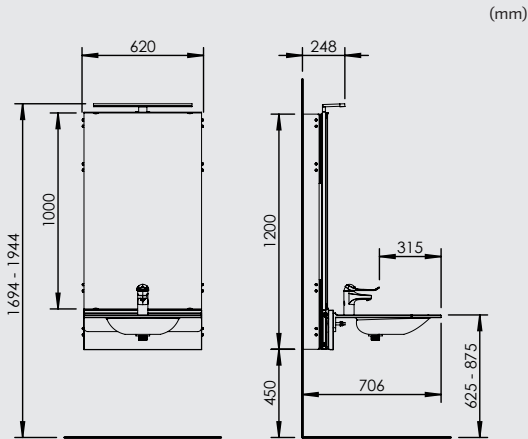
Standard equipment

- Washbasin, excl. overflow (425-015)
- Mixer (425-105)
- Mirror and lighting
- Flexible drain hose with drainage trap
- Flexible water hoses
- Hand controller with coiled cable
- Safety breaker

Specifications

Lift model	Electric steplessly height-adjustable washbasin module with mirror and lighting
Legroom	706 mm
Mixer	150 mm lever. Distance to mixer lever, 315 mm
Overall depth from wall	706 mm
Washbasin	Wash basin of solid surface material with integrated grab handles 600x550 mm, excl. overflow
Max load, washbasin	50 kg
Operation	Cable controller with hook, IP65
Width	620 mm
Installation	Wall mounted
Height adjustment	250 mm
Speed	18 mm/sec.
Lifting force	100 kg
Electrical connection	Plug for 230 V, max 1.5A
Lighting	Aluminium/plastic, colour: chrome LED lighting, 7W, 4000 k (connects to external power) Transformer: 230 V
Enclosure class	IPX4
Safety	The safety switch will stop the basin from lowering if it comes into contact with the user's legs.
Material-specification	Back panel: White melamine covered chipboard W899 with 2 mm ABS strip all round Mounting plate, washbasin: Powder coated aluzinc-coated sheet steel, white RAL 9010 Mirror: 1000x600x4 mm in silver-backed float glass with ground edges incl. mirror clips Safety switch and other sheet metal parts: Powder-coated sheet steel
Plumbing connections	Flexible water hoses and drain hose with water trap

CE





Functions and advantages

- Basin lifter for the optional washbasin

Standard equipment

- Mirror and lighting
- Hand controller with coiled cable

Recommended options

- Washbasin
- Mixer
- Flexible water hoses
- Flexible drain hose with drainage trap
- Safety breaker

Specifications

Lift model	Electric steplessly height-adjustable washbasin module with mirror and lighting
Operation	Cable controller with hook, IP65
Width	620 mm
Installation	Wall mounted
Height adjustment	250 mm
Speed	18 mm/sec.
Lifting force	100 kg
Electrical connection	Plug for 230 V, max 1.5A
Lighting	Aluminium/plastic, colour: chrome LED lighting, 7W, 4000 k (connects to external power) Transformer: 230 V
Enclosure class	IPX4
Safety	Safety switch available as an option
Suitable basins	Max. weight: 40 kg Max width 600 mm Max depth: 600 mm Attachment: Washbasin, bolt installation centre-to-centre 280 mm
Material-specification	Back panel: White melamine covered chipboard W899 with 2 mm ABS strip all round Mounting plate, washbasin: Powder coated aluzinc-coated sheet steel, white RAL 9010 Mirror: 1000/600/4 mm in silver-backed float glass with ground edges incl. mirror clips Other sheet metal parts Powder-coated sheet steel
Plumbing connections	Flexible drain hose with drainage trap
	CE

Art. no.	Designation
433-0.	BASICLINE 433-0 - Excl. safety switch , water hoses and drain hose



Washbasin



Page 62

Mixer



Page 65

Hoses



Page 68

Safety system



Page 69

Control buttons



Page 69

